

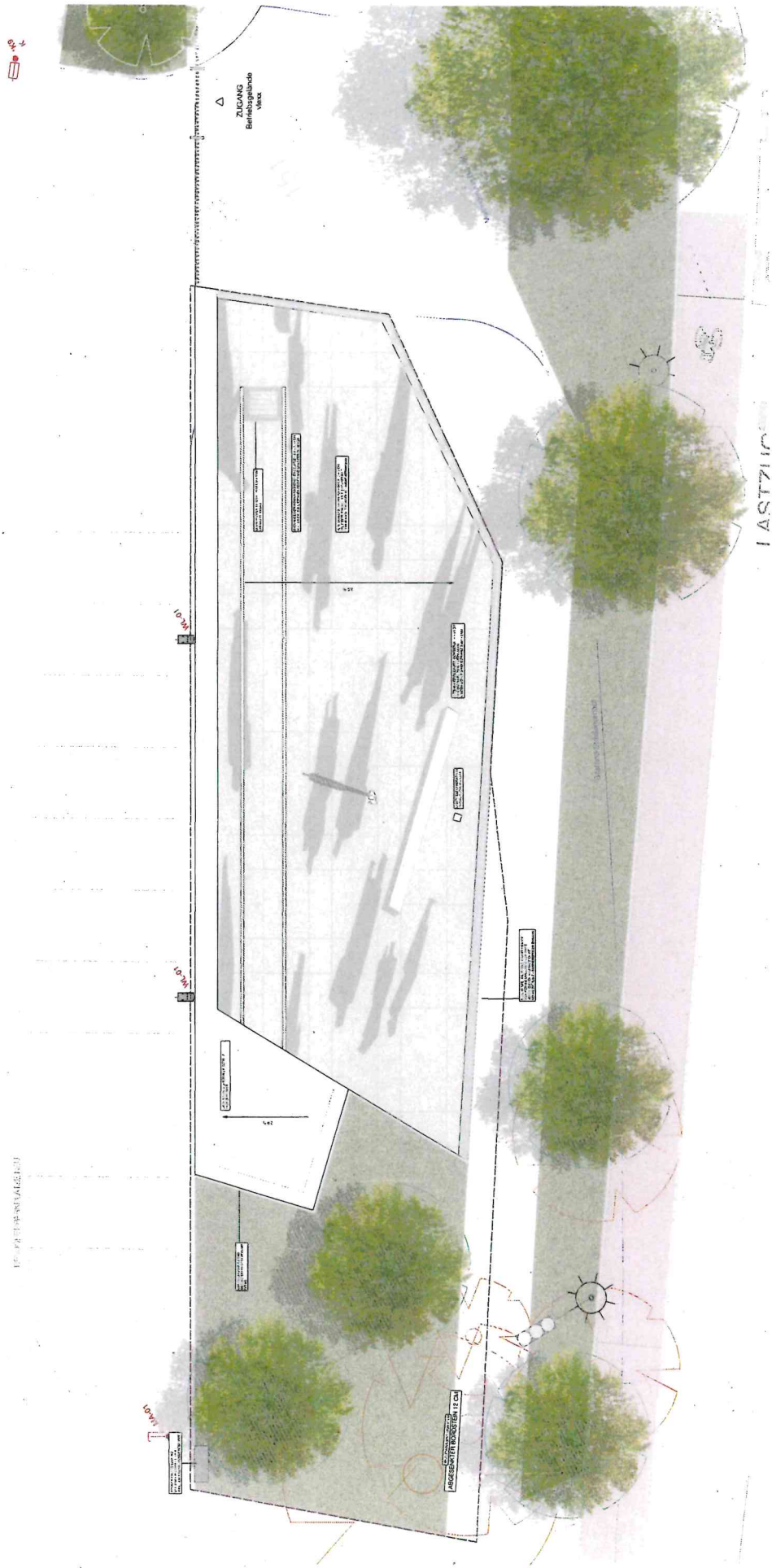
GDM . GEDENKORT DEPORTATIONSRAMPE MAINZ



ATELIER . SCHMELZER . WEBER | BILDHAUER ANDREAS THEURER
Kostenvorstellung | 22.08.2023

LANDESHAUPTSTADT MAINZ
vertreten durch Gebäudewirtschaft Mainz

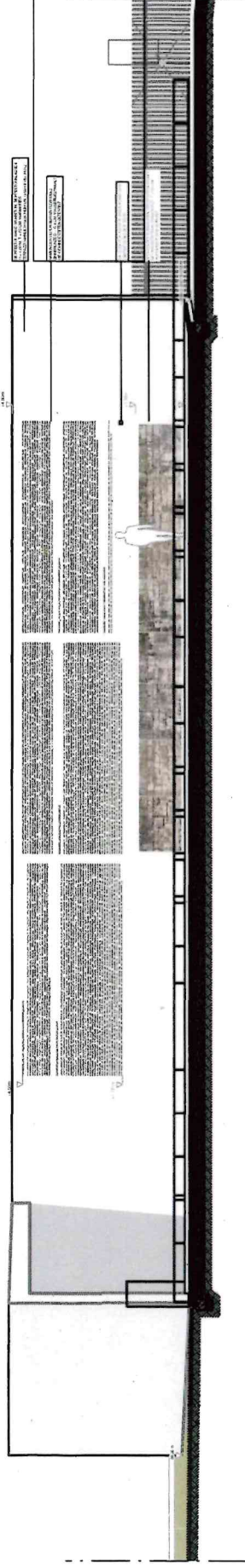
GDM . GEDENKORT DEPORTATIONSRAMPE MAINZ Planstand LPH 4



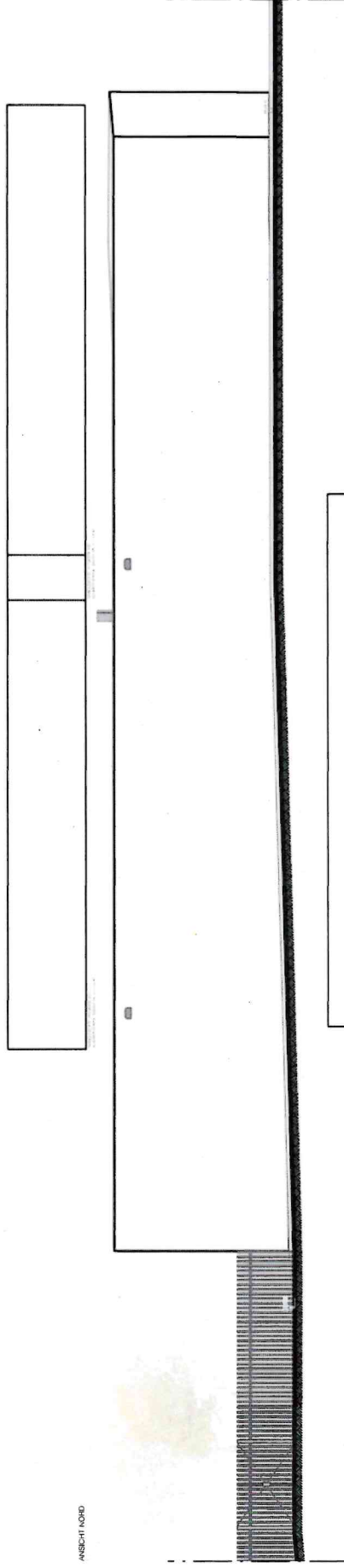
GDM . GEDENKORT DEPORTATIONSRAMPE MAINZ

Planstand LPH 4

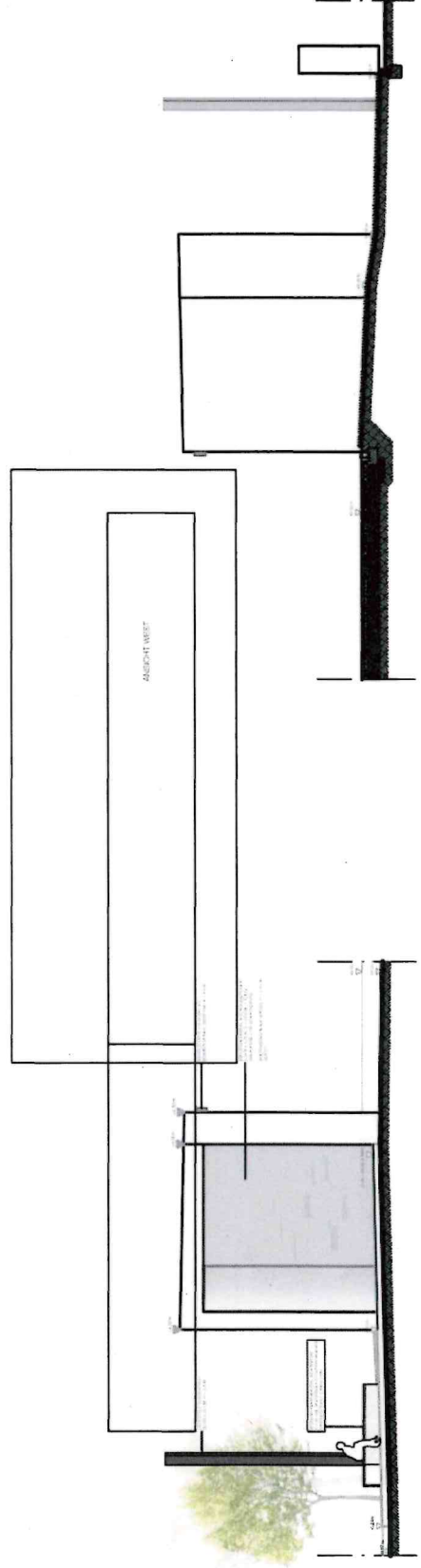
ANSICHT SÜD



ANSICHT NORD

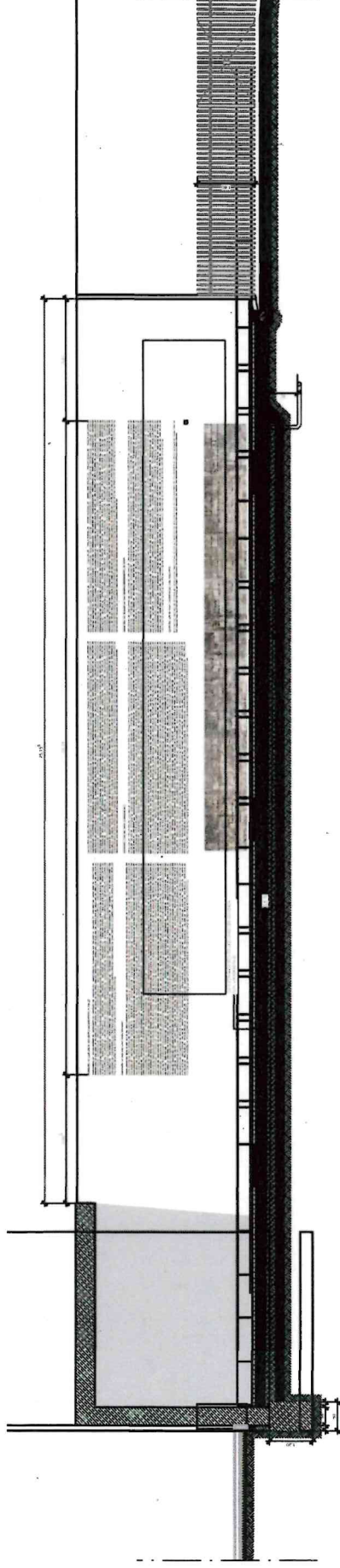


ANSICHT OST

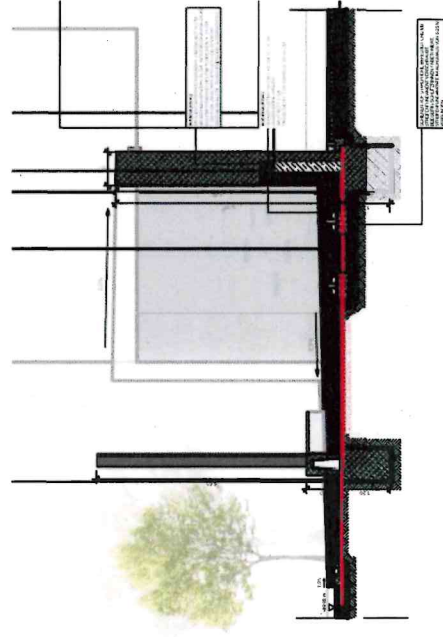


GDM . GEDENKORT DEPORTATIONSRAMPE MAINZ
Planstand LPH 4

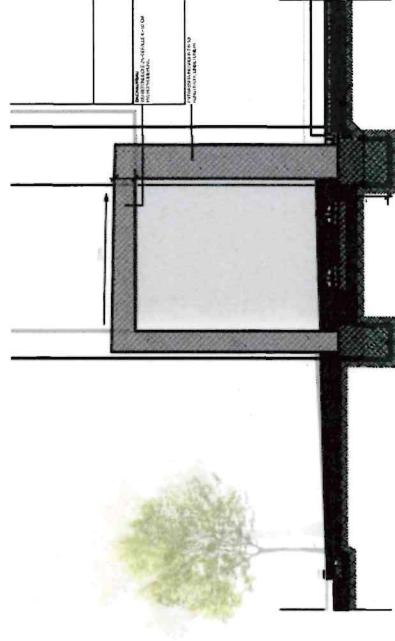
SCHNITT AA



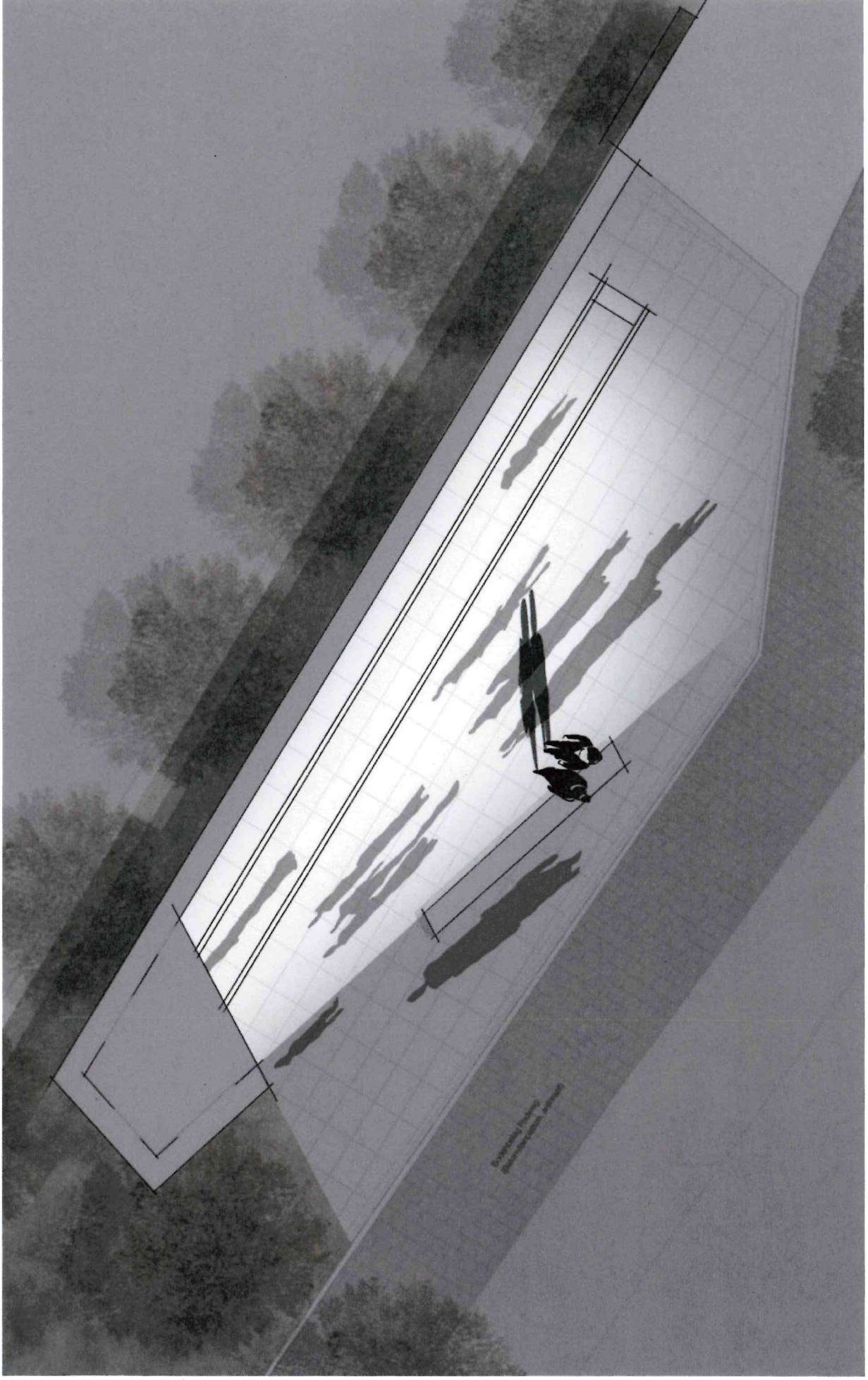
SCHNITT BB



SCHNITT CC



GDM . GEDENKORT DEPORTATIONSRAMPE MAINZ
Planstand LPH 4



GDM . GEDENKORT DEPORTATIONSRAMPE MAINZ
Planstand LPH 4



DEPORTIERT AM

ANTON BAMBERGER 1910

ERNESTINE GEORG 1906

JOHANNA KLING 1910

FRANZISKA LEHMANN 19

KARL LEHMANN 1930

WILHELM LEHMANN 1929

ANTON

