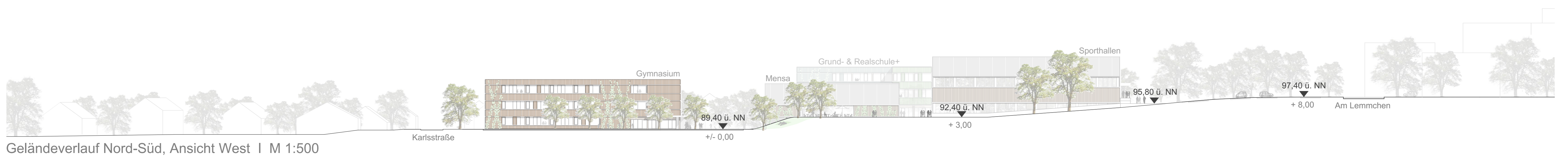




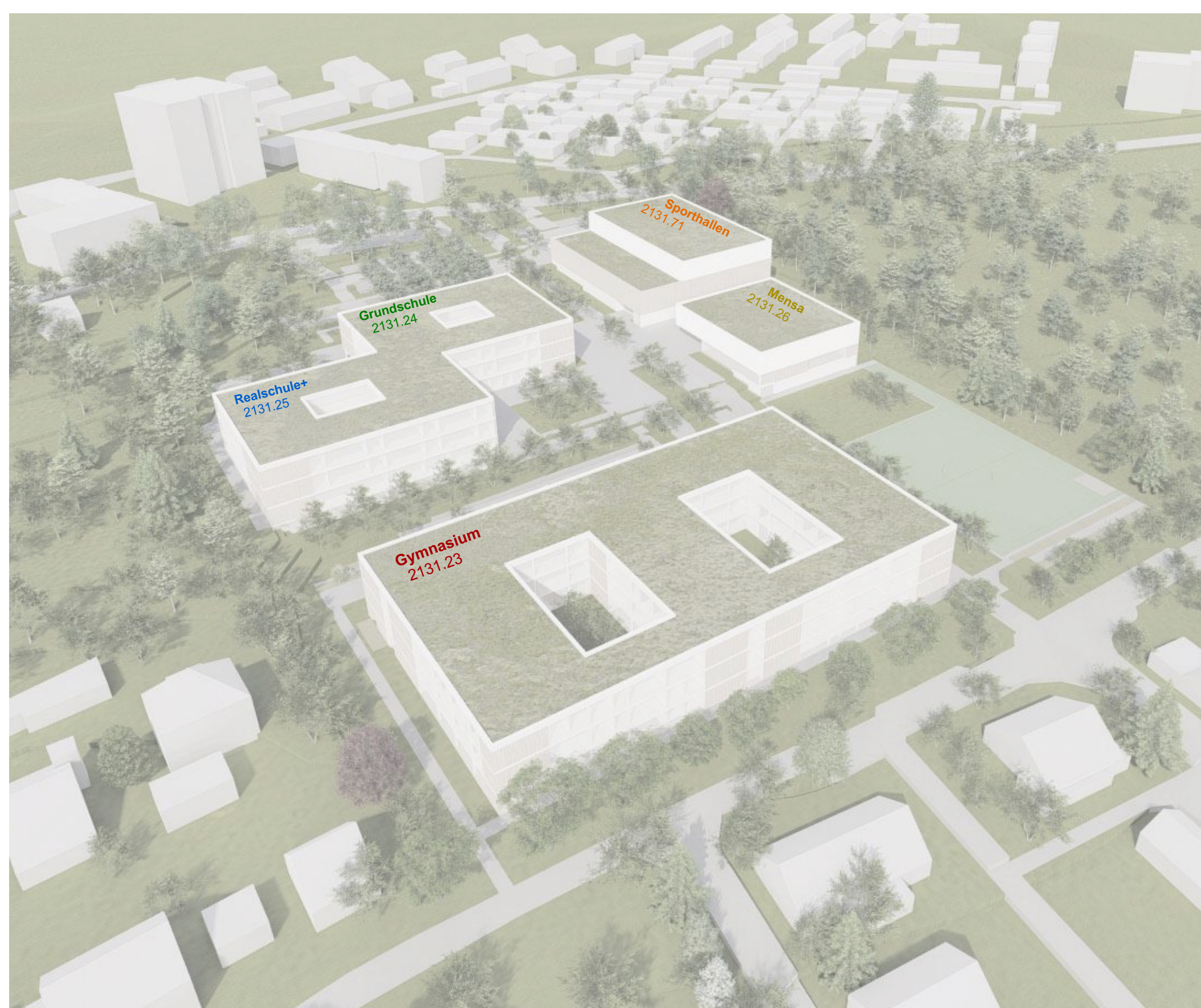
Lageplan | M 1:500



Geländeverlauf Süd-Nord, Ansicht Ost | M 1:500



Geländeverlauf Nord-Süd, Ansicht West | M 1:500



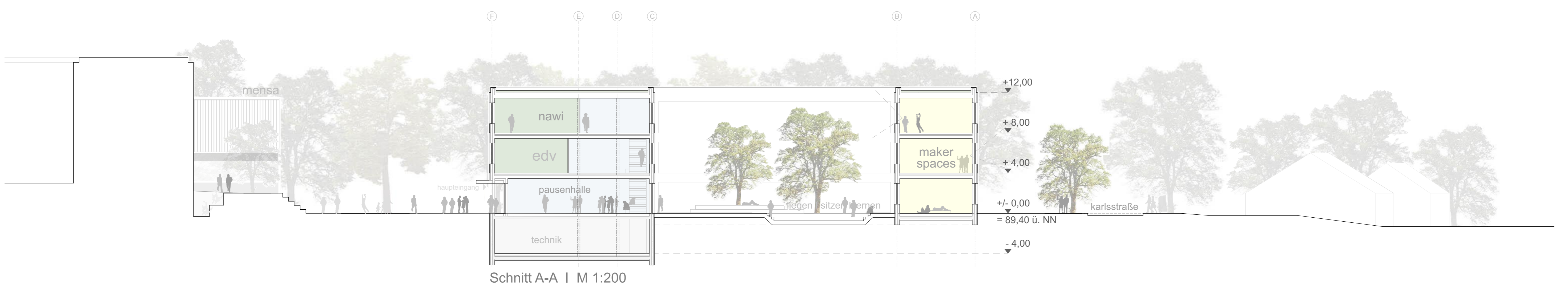
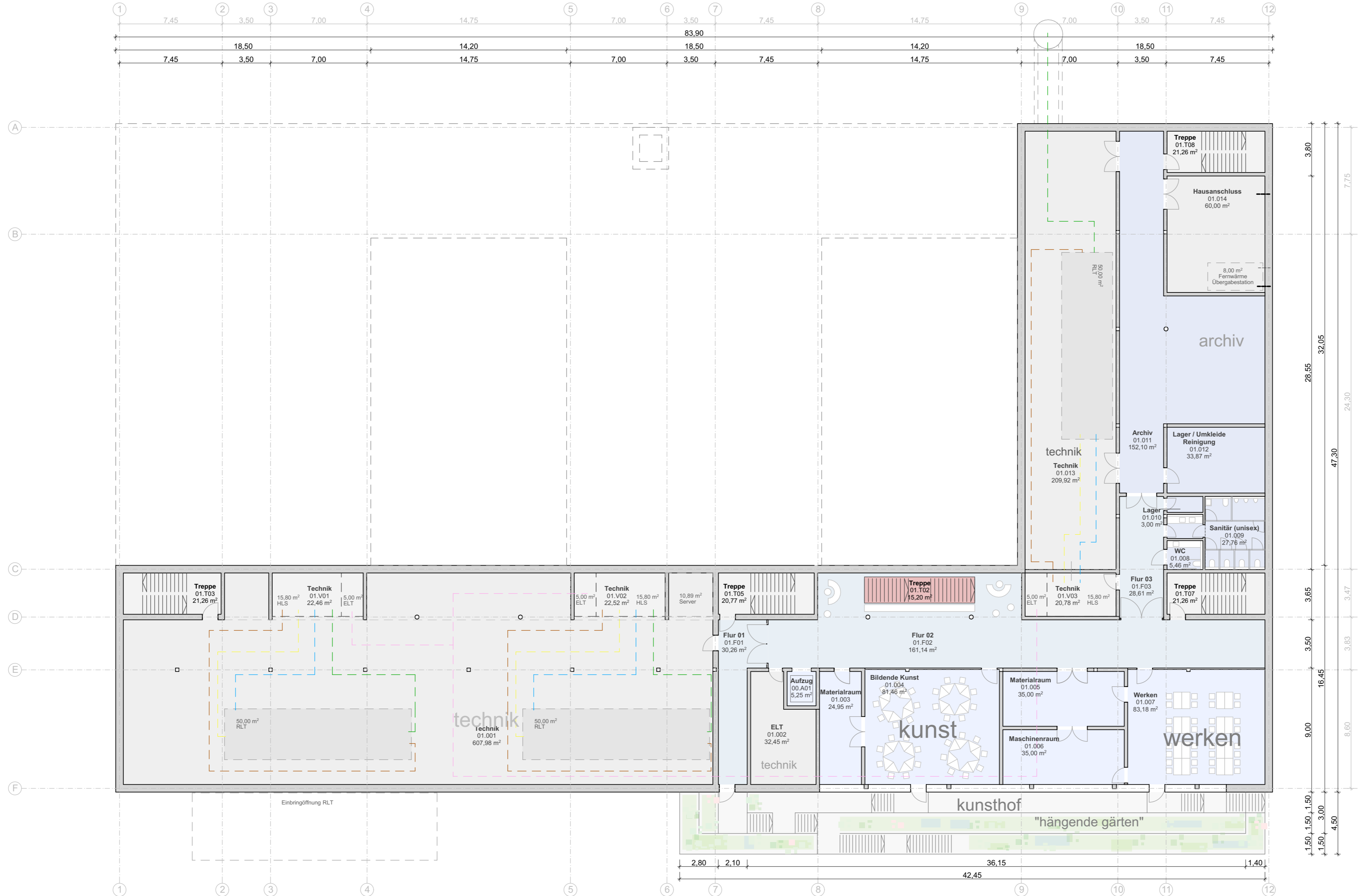
3D-Modell | Nord-Ost



Schwarzplan | M 1:2.000



UG | Technik, Werken, Kunst

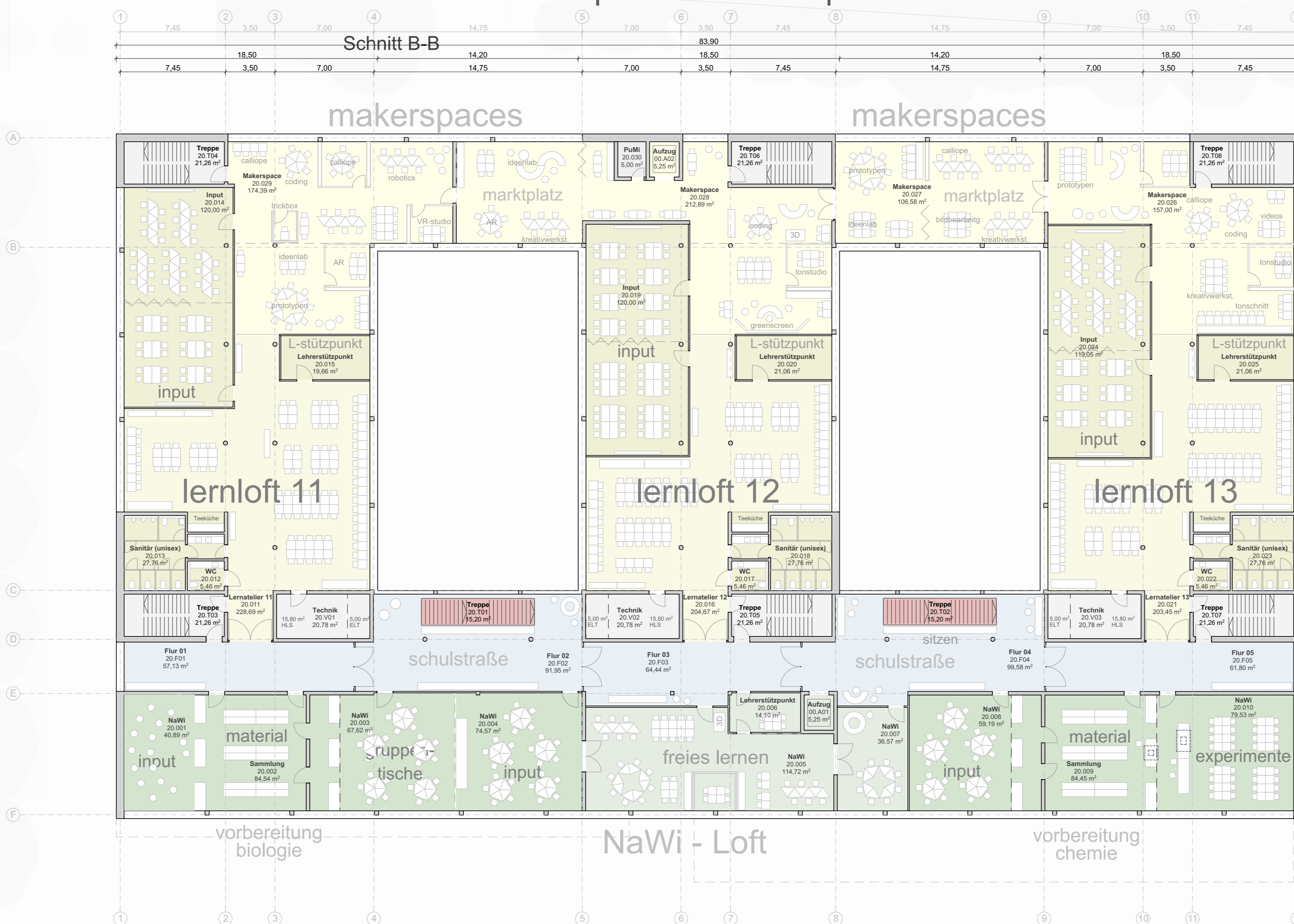




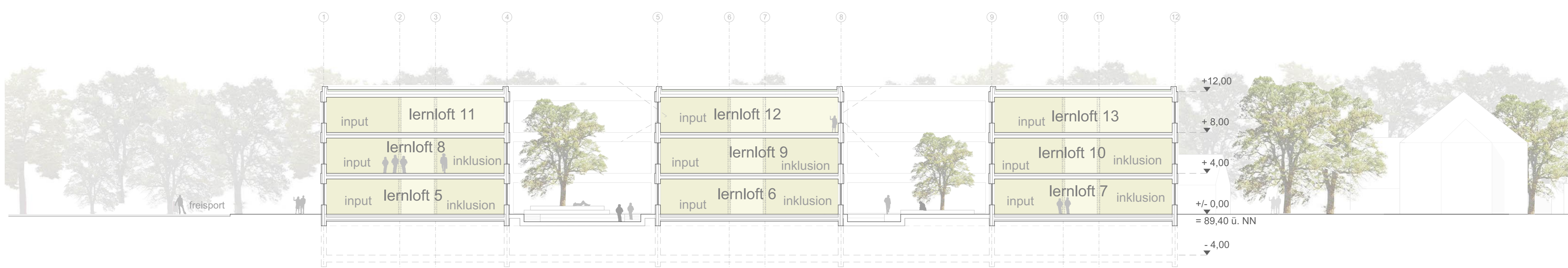
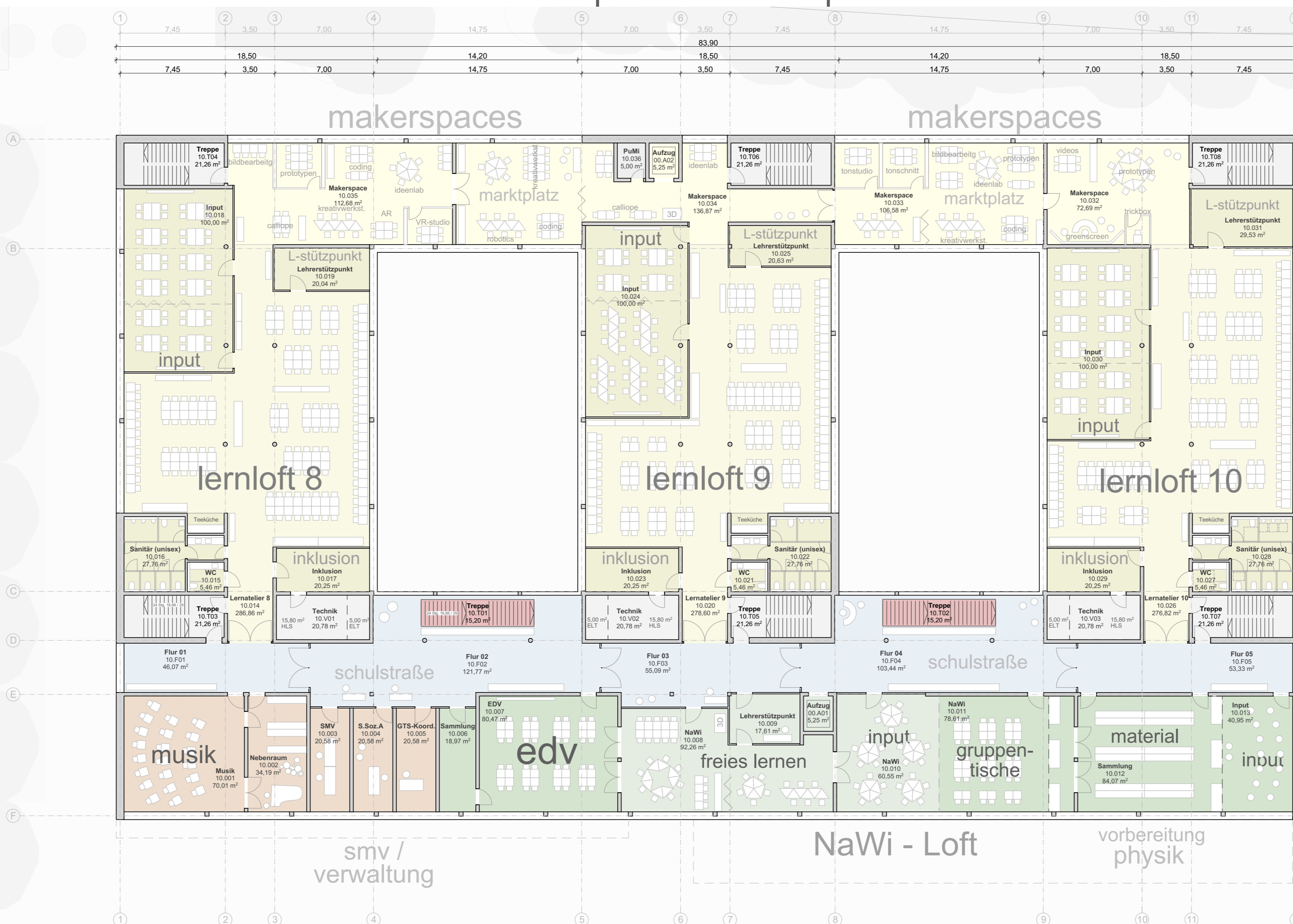
Ansicht Nord | M 1:200

+/- 0.00
= 89,40 ü. NN

2.OG | Lernhaus III | 11-13

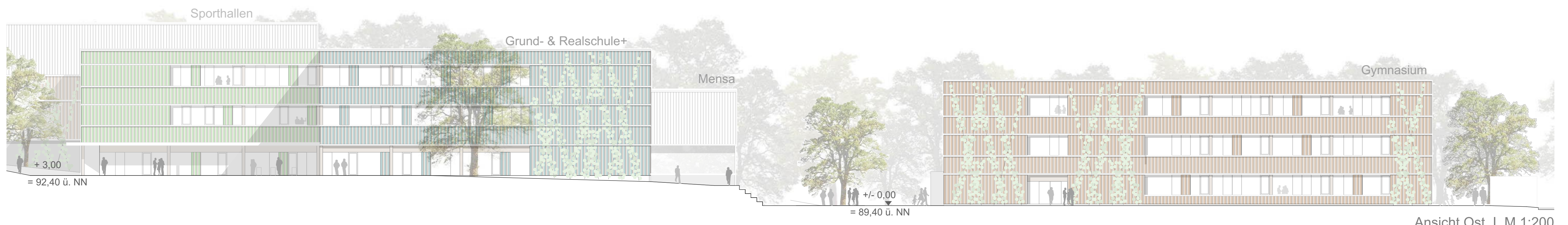


1.OG | Lernhaus II | 8-10

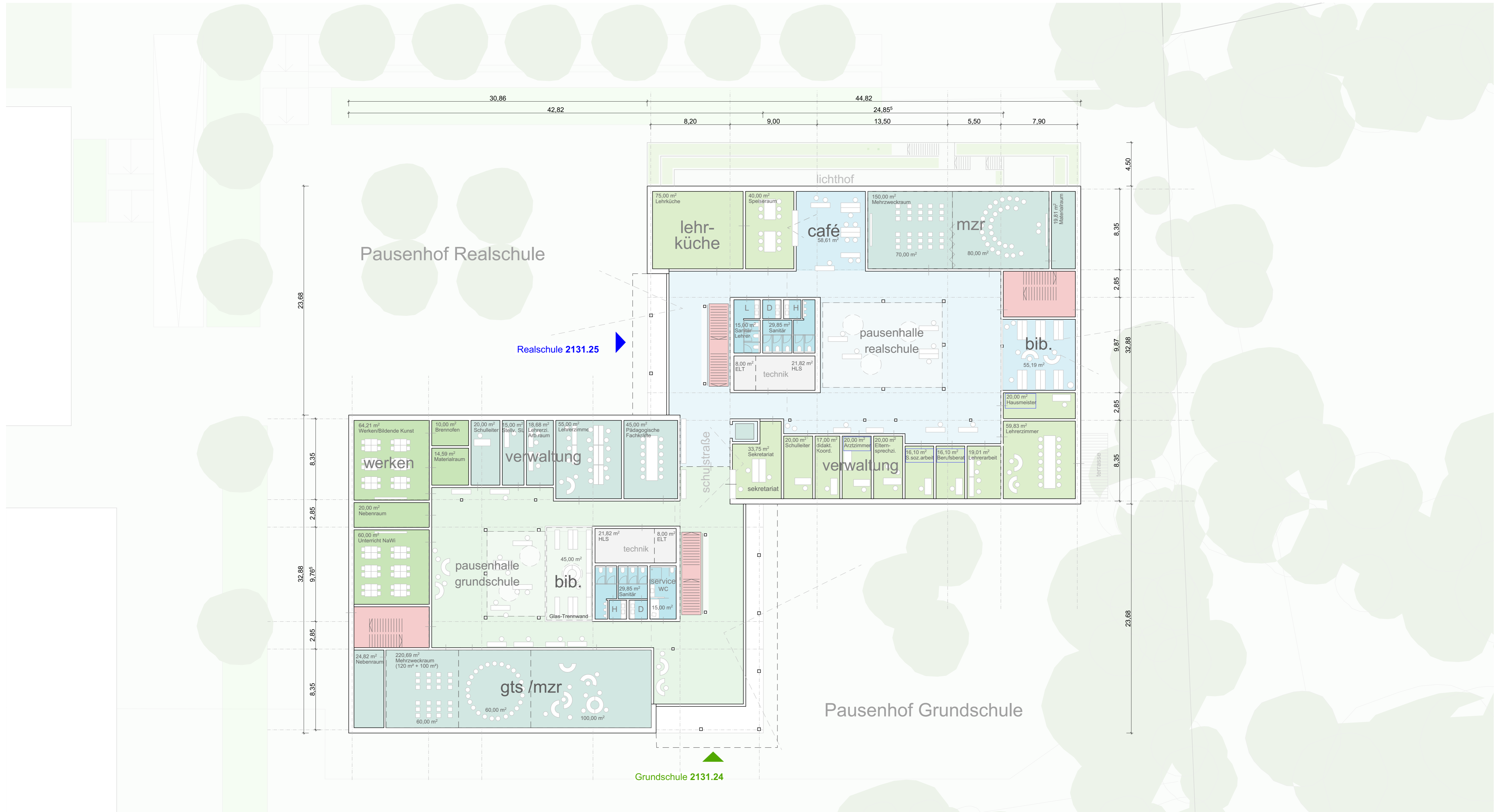


Schnitt B-B | M 1:200

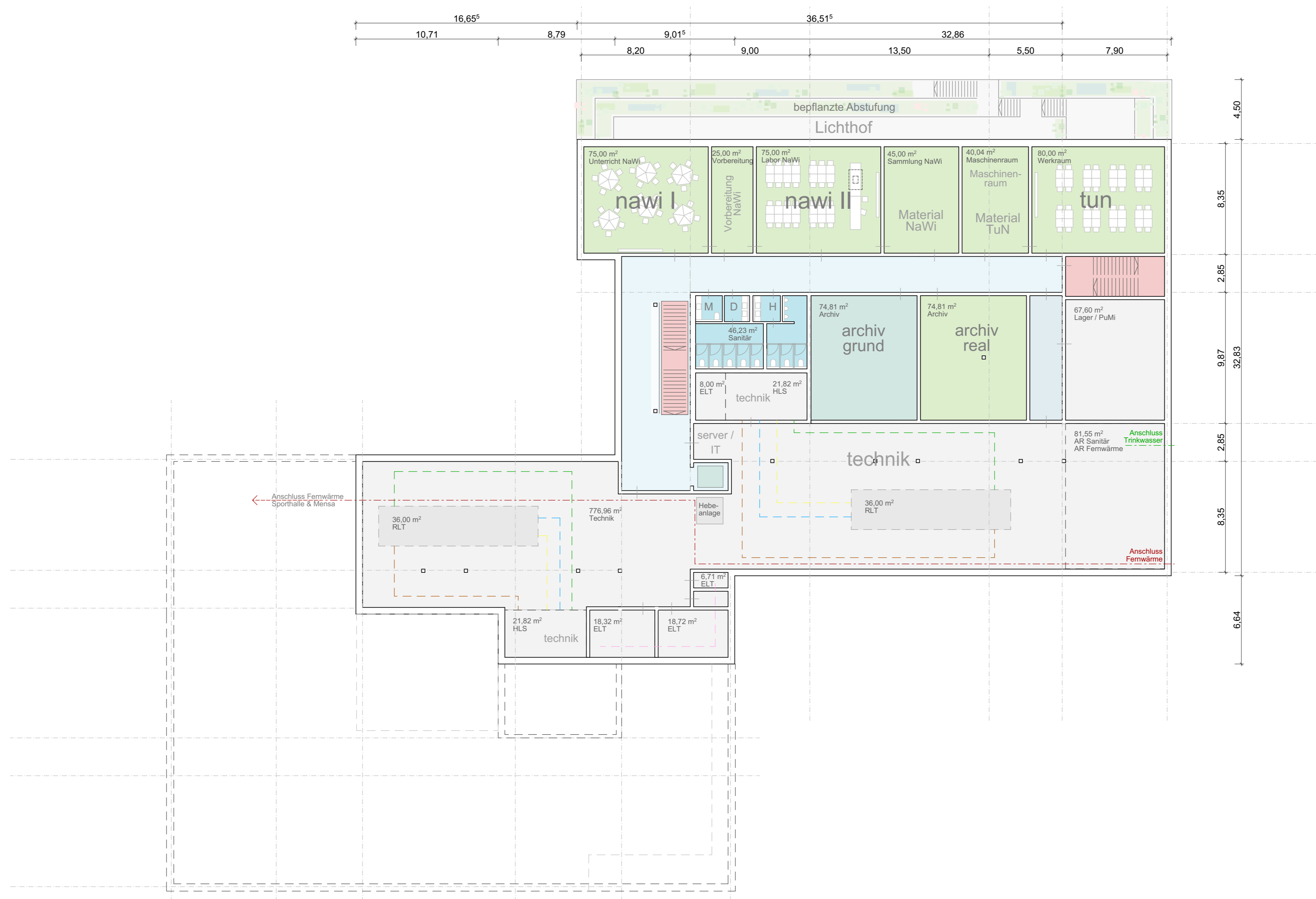
+12,00
+8,00
+4,00
+/- 0,00
= 89,40 ü. NN
-4,00



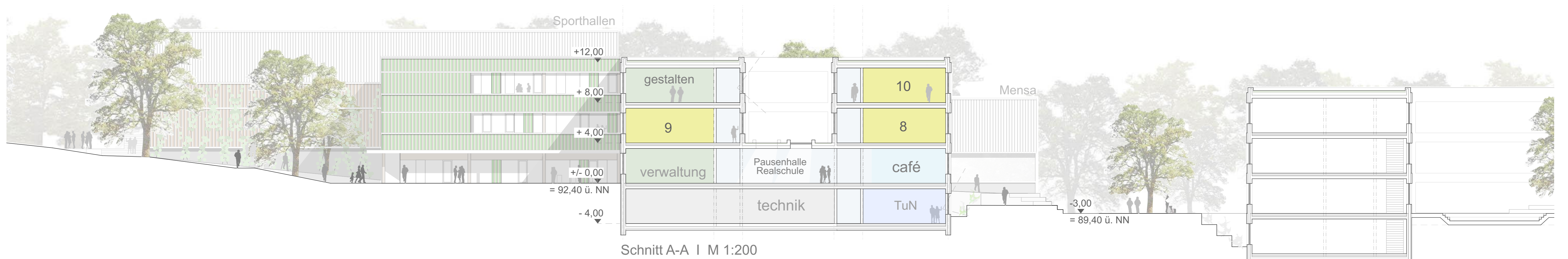
Ansicht Ost | M 1:200



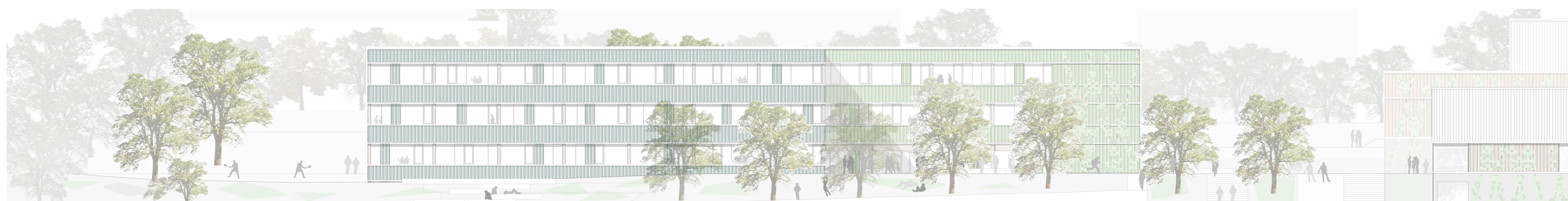
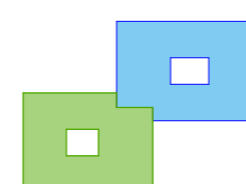
Erdgeschoss | M 1:200



Untergeschoss | M 1:200



Schnitt A-A | M 1:200



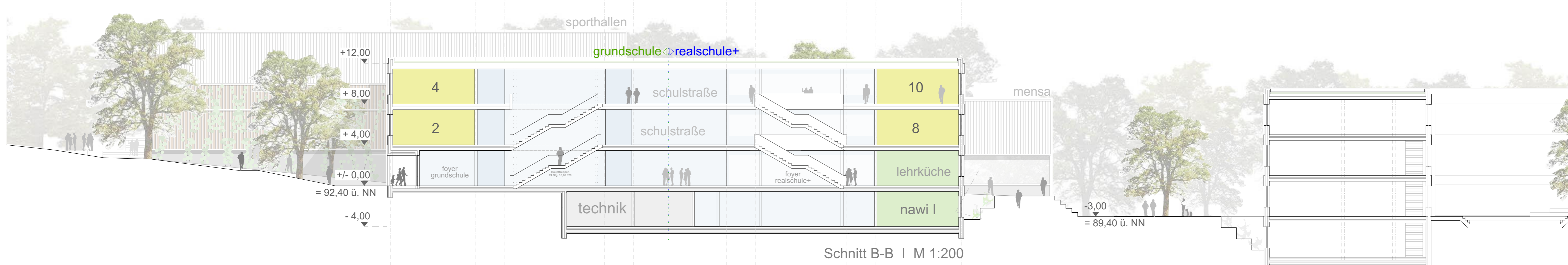
Ansicht Nord | M 1:200



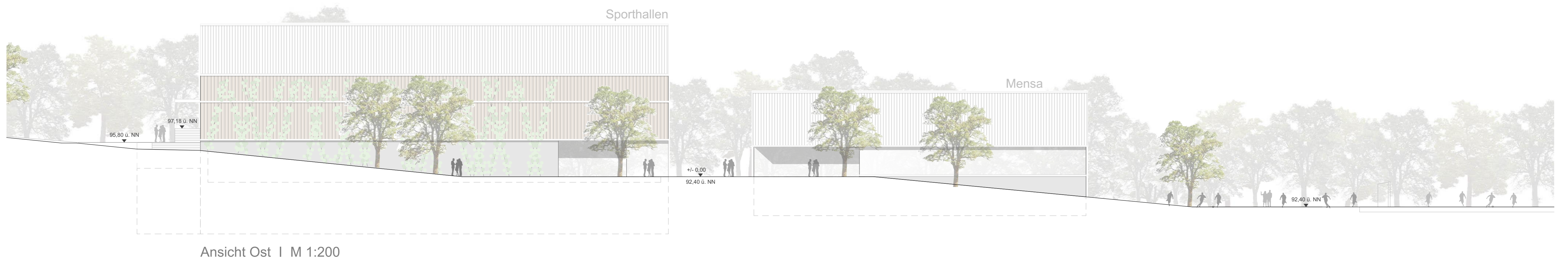
2. Obergeschoss | M 1:200



1. Obergeschoss | M 1:200



Schnitt B-B | M 1:200



Ansicht Ost | M 1:200



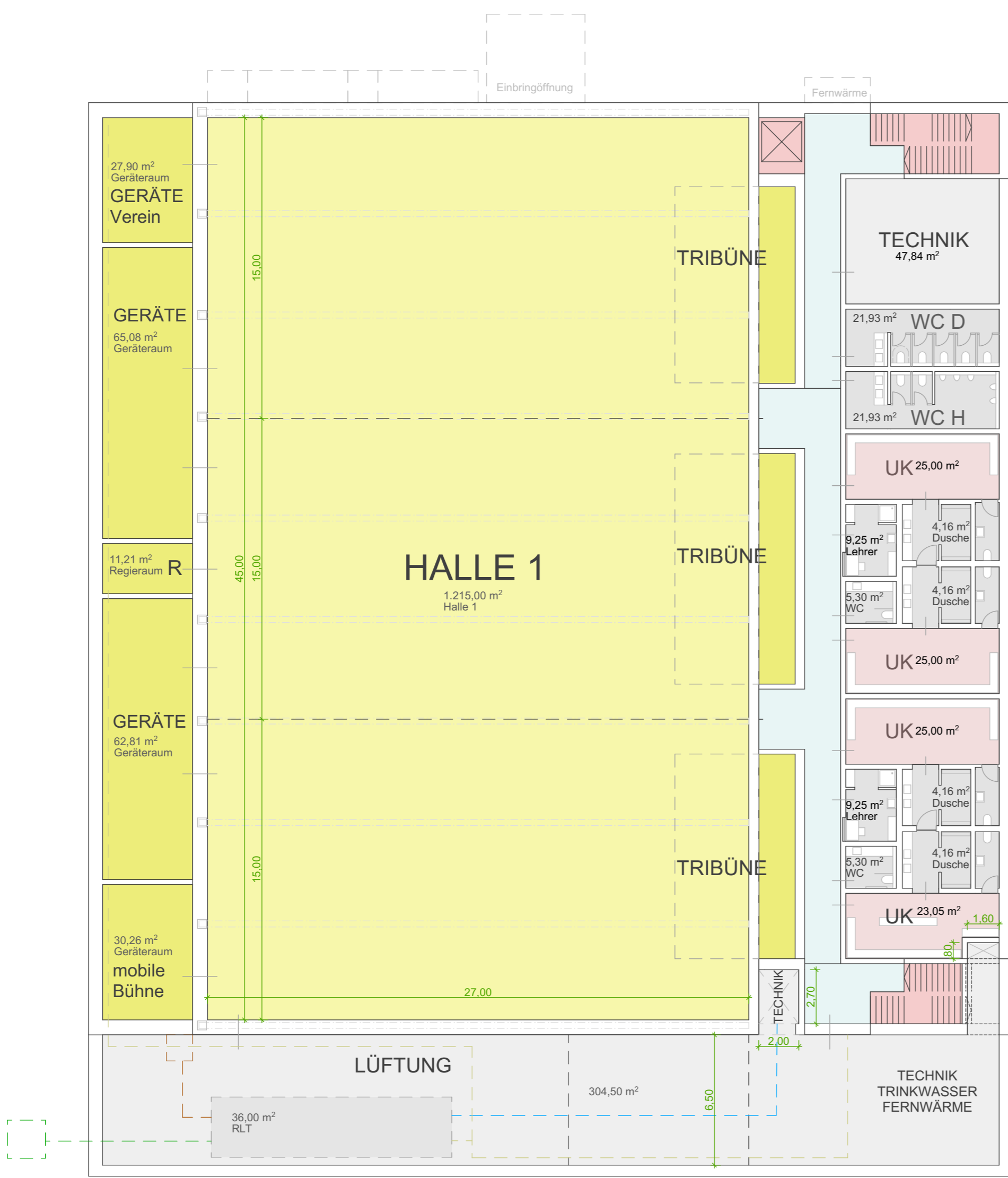
Ansicht Süd | M 1:200



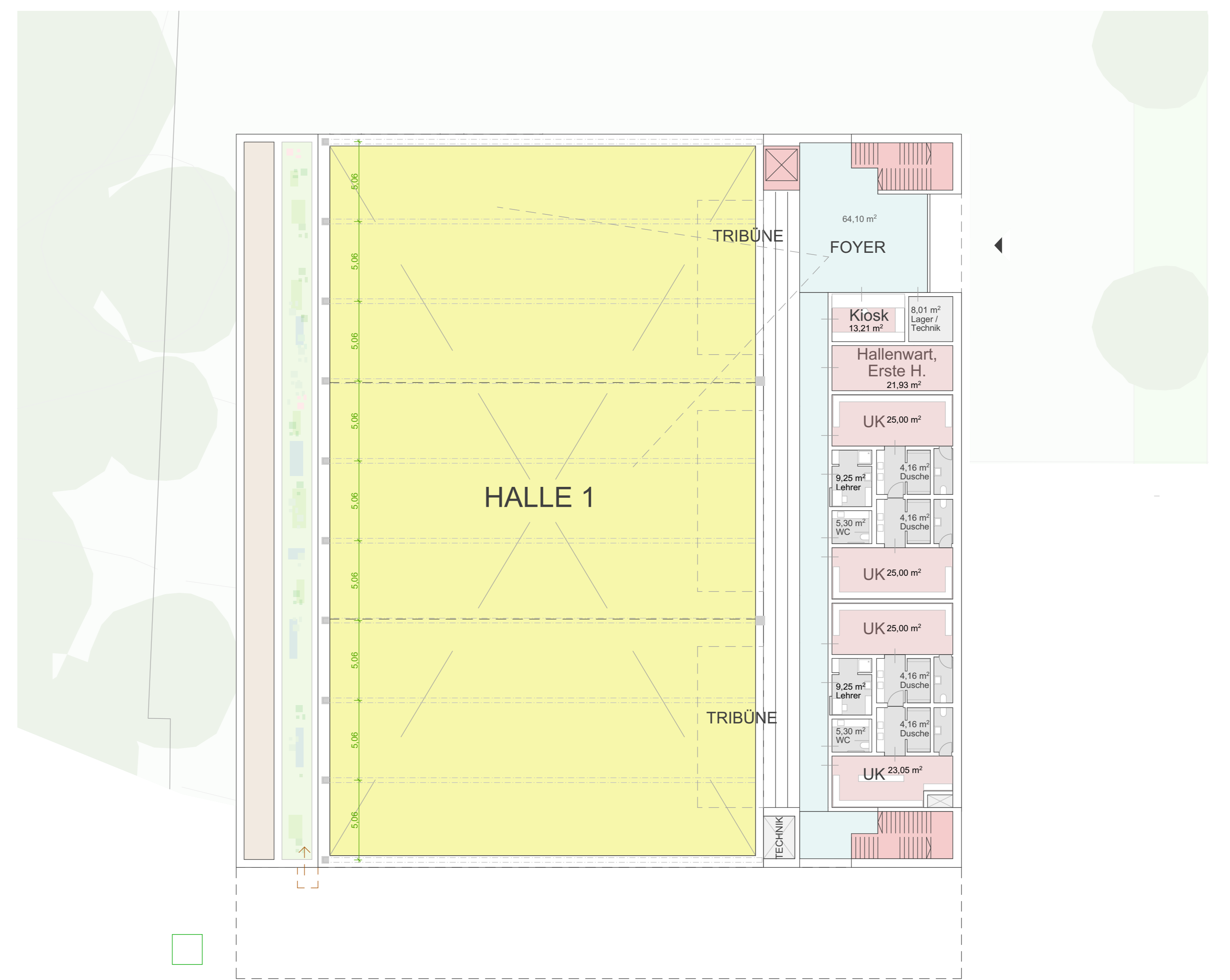
Ansicht West | M 1:200



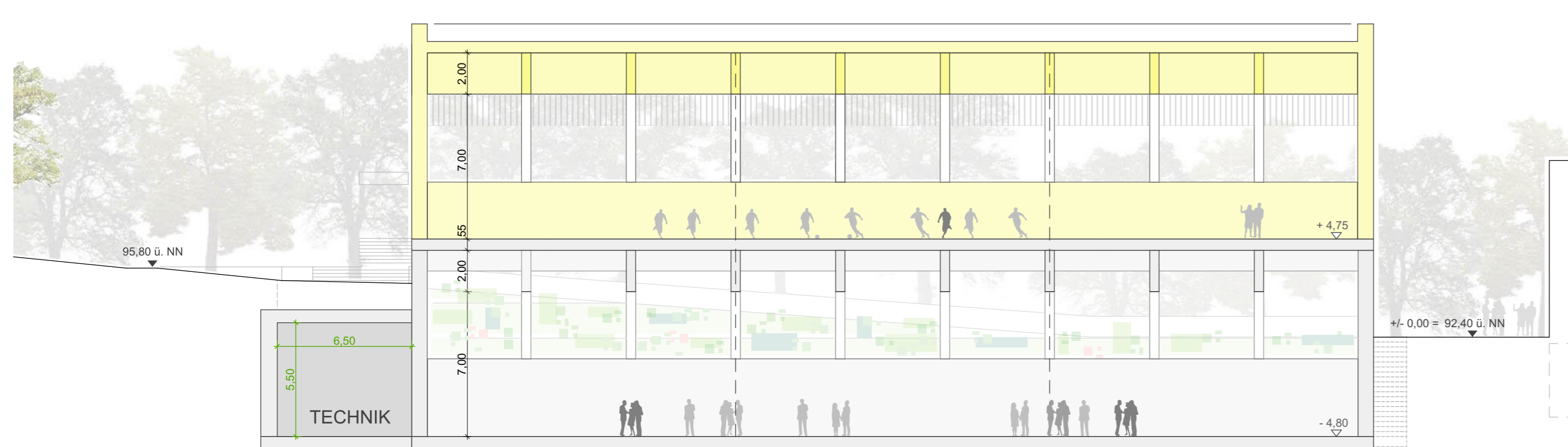
Obergeschoss Sporthalle | M 1:200



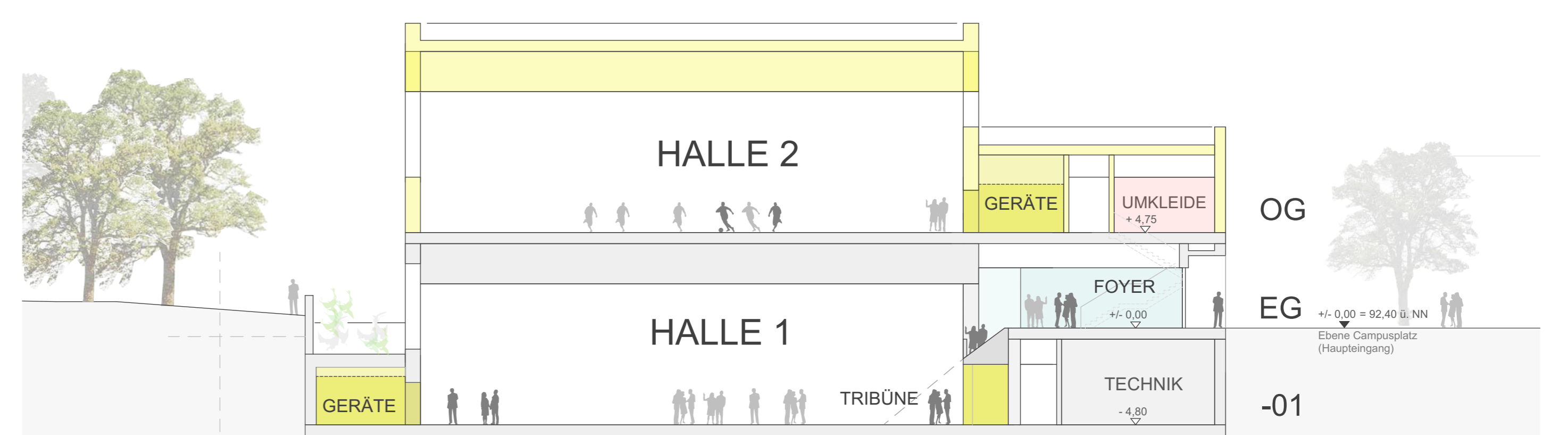
Untergeschoss Sporthalle | M 1:200



Erdgeschoss Sporthalle | M 1:200



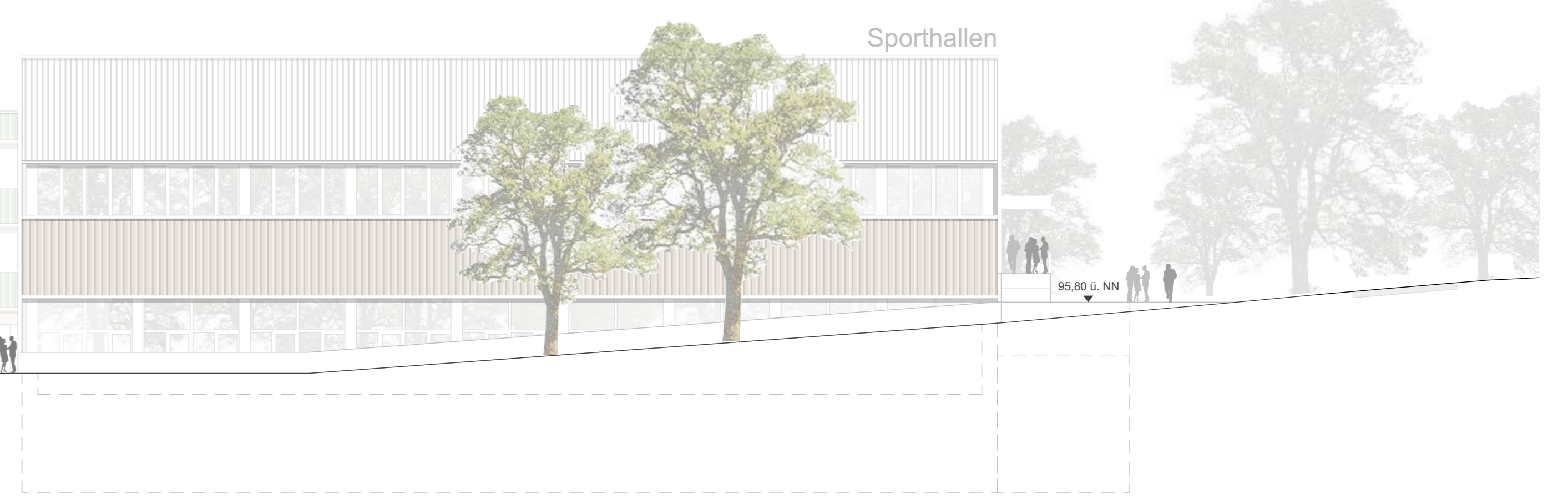
Längsschnitt Sporthalle | M 1:200



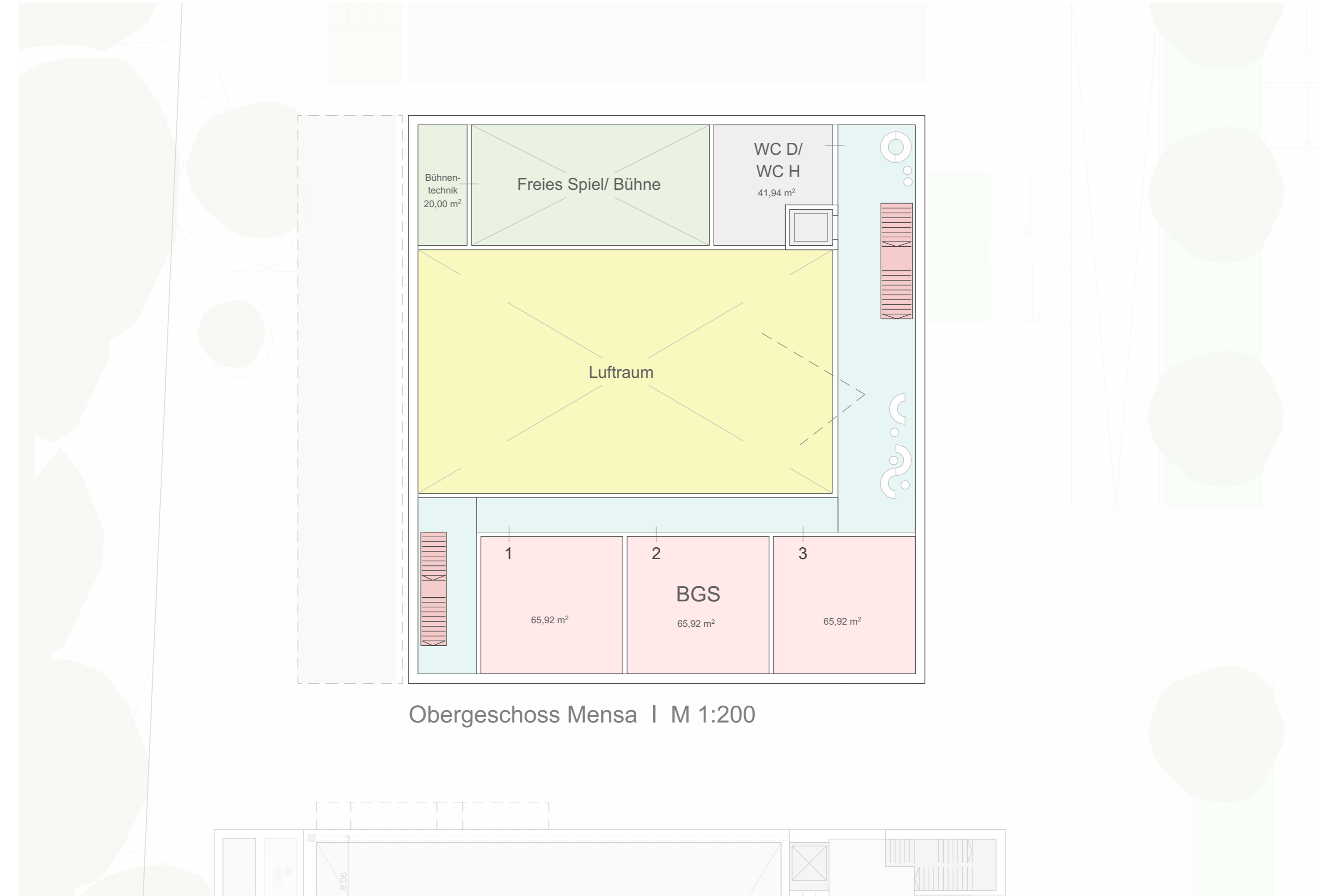
Querschnitt Sporthalle | M 1:200



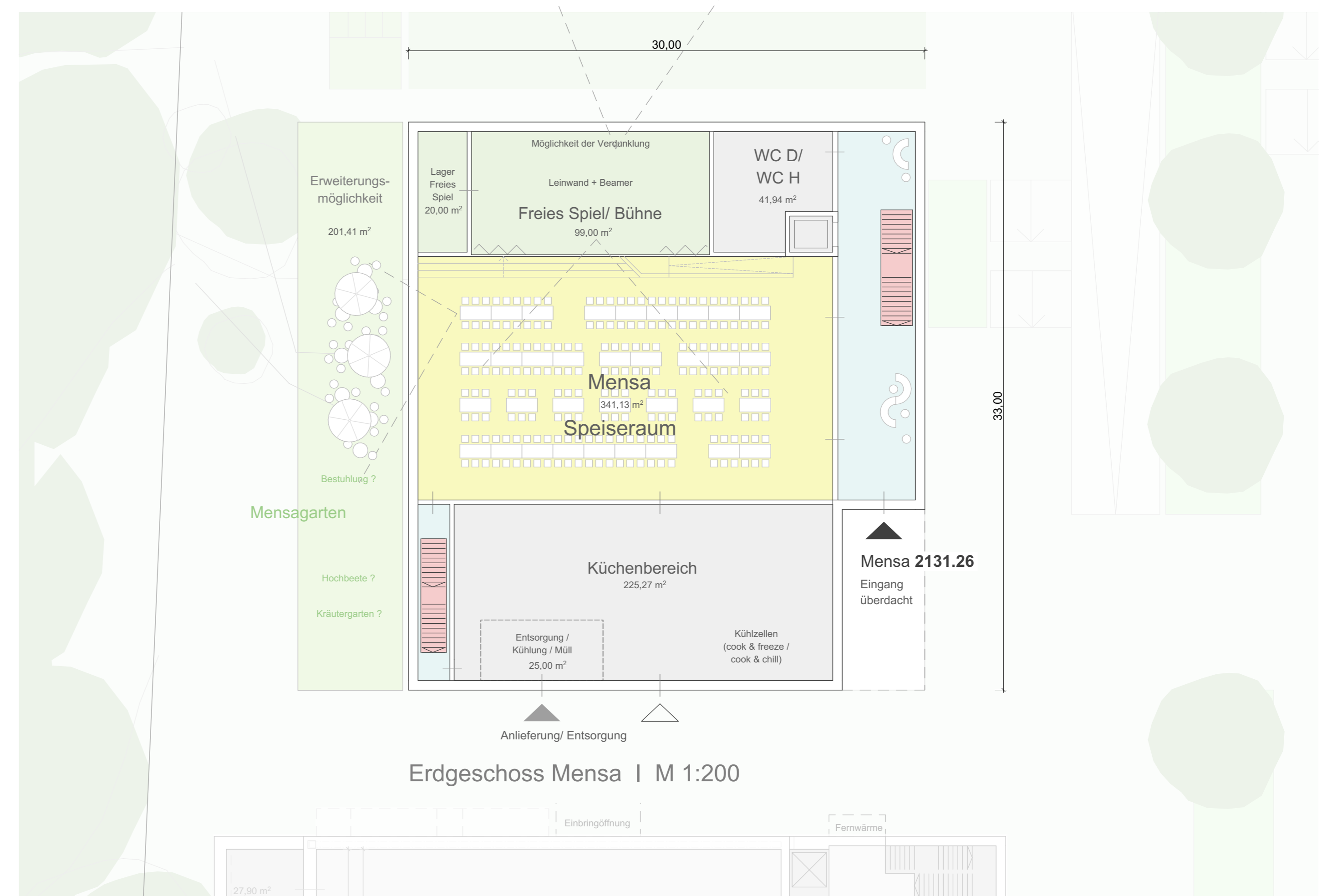
Ansicht West | M 1:200



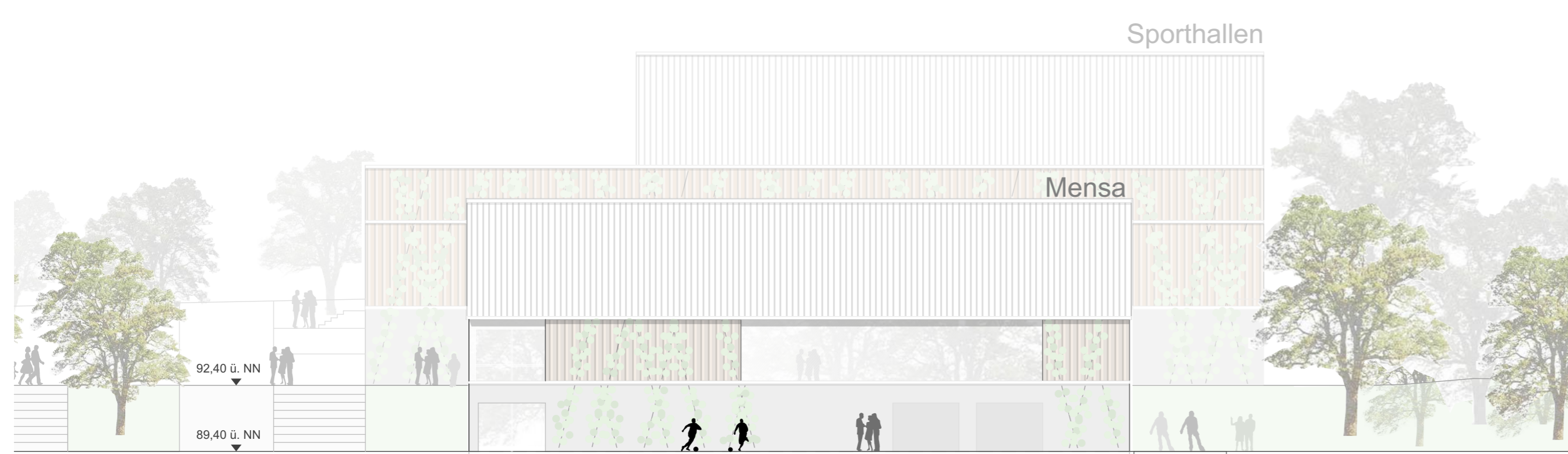
3D-Modell | Nord-West



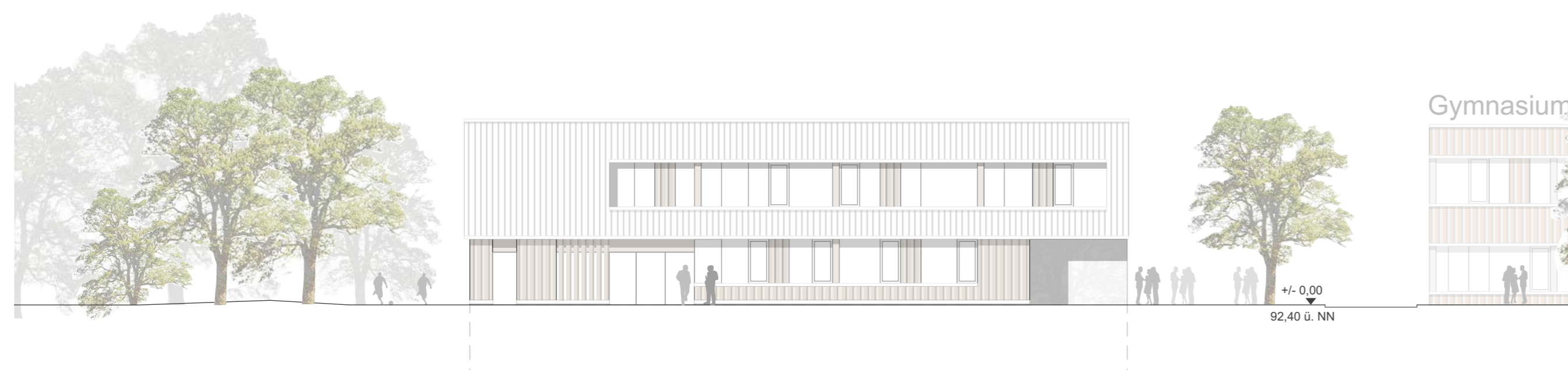
Obergeschoss Mensa | M 1:200



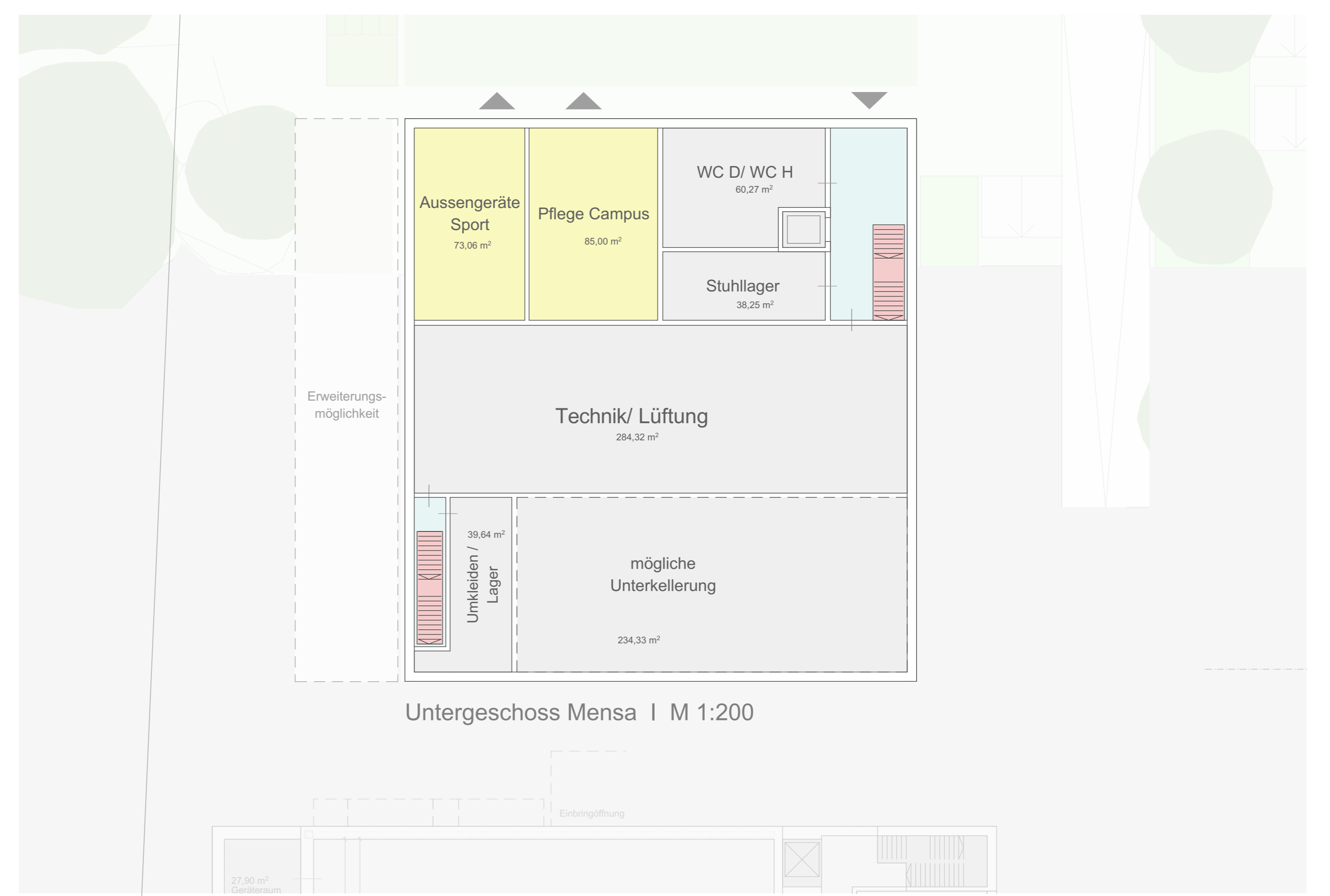
Erdgeschoss Mensa | M 1:200



Ansicht Nord | M 1:200



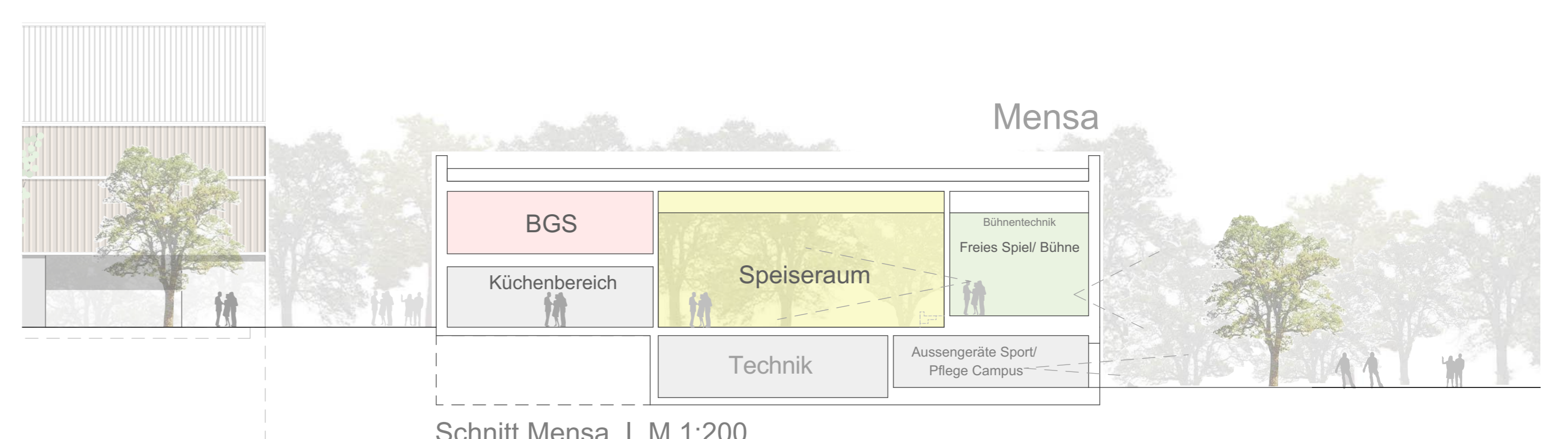
Ansicht Süd | M 1:200



Untergeschoss Mensa | M 1:200



Ansicht Ost | M 1:200



Schnitt Mensa | M 1:200